



Optima

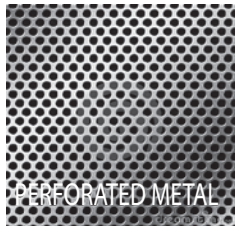
AUTOMOBILE ELEVATOR

citlelevator.com



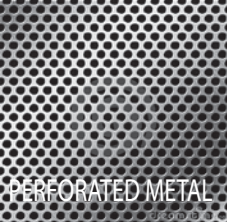
OPTIONS

METALIC FINISHES



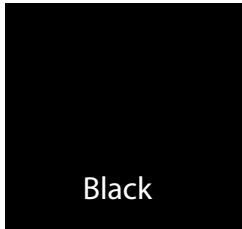
OPTIONS

METALIC FINISHES

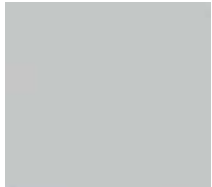


OPTIONS

PINTED FINISH



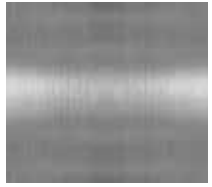
OPTIONS



RAL 7035 (S)



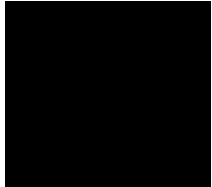
GALVANIZED STEEL (O)



STAINLESS STEEL (O)



DARK GRAY (O)



BLACK (O)



WHITE (O)



STOP LIGHT



EXTRA LARGE BUTTONS (O)
DOUBLE COP (O)



LED CEILING LIGHT (O)

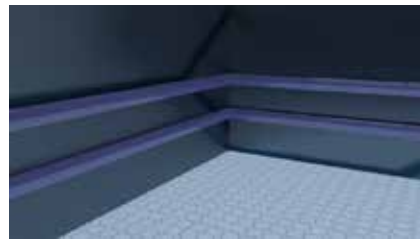
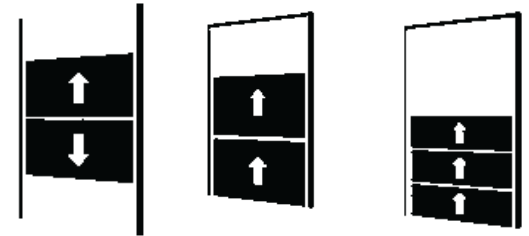


REMOTE (O)



BATTERY LOWRING (O)

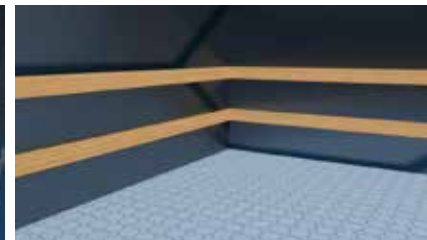
DOORS & GATES



PLASTIC (O)

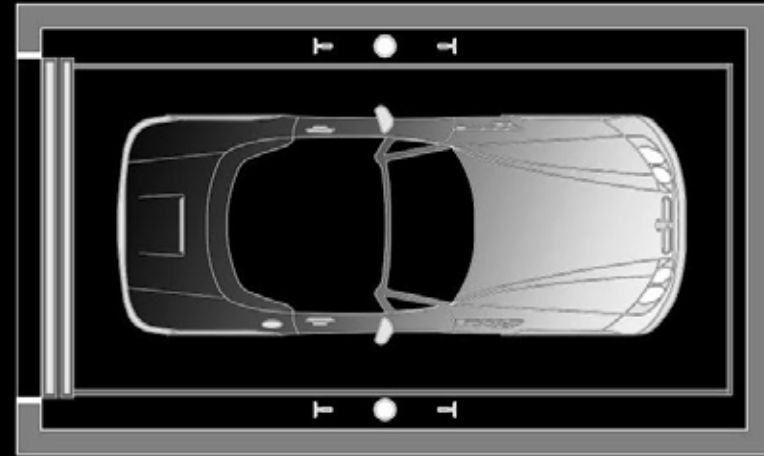


STEEL (O)

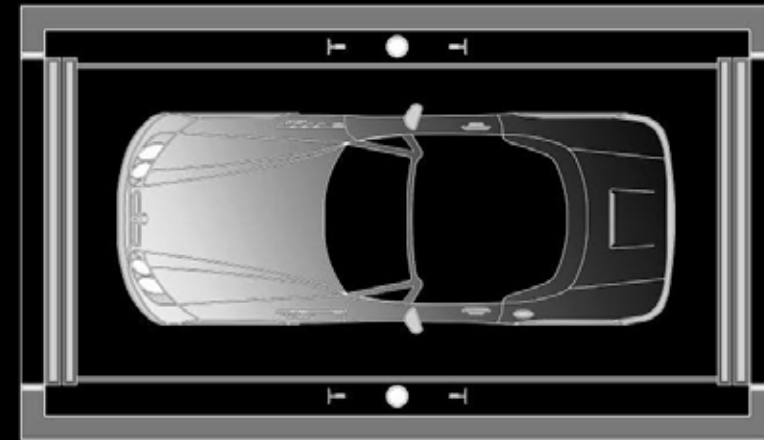


WOOD(O)

SPECIFICATIONS



STYLE 1 CAR - ON/OFF SAME SIDE



STYLE 2 CAR - ON/OFF EITHER SIDE

TECHNICAL SPECIFICATIONS

Code: ASME A17.1 Capacity: Up to 12000lbs (5455kg) Speed: Up to 120 fpm (.61m/s) Max Cab Size: 238sq/ft Drive: Hydraulic Operation: Automatic

Controller: Programmable logic control (PLC) Power: 3 Phase Power Failure: Battery Back-up lowering (o) Emergency: Hands Free telephone Max Travel: 60ft (15m)

Max # of Stops: 6 Landing Doors: Vertical Bi-parting